

July 15, 2019

**STATE OF NEW HAMPSHIRE
DEPARTMENT OF TRANSPORTATION
BUREAU OF HIGHWAY DESIGN**

CONFERENCE REPORT

PROJECT: Dover - Somersworth - Rochester 29604
NH Route 108 Complete Streets Improvement Project

DATE OF CONFERENCE: May 2, 2019

LOCATION OF CONFERENCE: Somersworth High School Career Technical Center, 18
Cemetery Road, Somersworth, NH

ATTENDED:

NHDOT

Wendy Johnson
William Lambert
Tony King
Trent Zanes
Tobey Reynolds

MJ Team

Gene McCarthy
Scott Ozana
Christine Perron
Jennifer Zorn
Mike Long

37 people signed in. Approximately 5 other people attended but did not sign in (see attached sign-in sheets).

SUBJECT: Public Listening Session

NOTES ON CONFERENCE:

G. McCarthy and W. Johnson provided a brief presentation of the project which involves the study of improvements to NH Route 108 from the intersection of NH Route 9/Indian Brook Drive in Dover to Innovation Drive in Rochester, approximately 5 miles. NH Route 108 is generally two lanes with variable width shoulders through the project area. Localized improvements have been made in recent decades at key intersections and some commercial developments to add turning lanes, shoulders, and traffic signals. However, safety and mobility issues remain a concern.

The Listening Session began with a formal presentation beginning at approximately 7:00 PM (presentation attached). At approximately 7:30 PM the attendees were separated into six discussion groups, each with a facilitator from the project team. Three questions were asked of the discussion group and notes were taken by a member of the group. The questions were:

1. What do you think are the problems/challenges in the project corridor?

2. What do you think is missing in the project corridor?
3. What do you think are the opportunities in the project corridor?

Approximately 15 minutes of time was allocated for each question. In addition, each group was provided a Project Area Map that showed the project corridor on an aerial photo and noted key features existing in the corridor. The groups were encouraged to use the map as a template for drawing ideas and providing graphical input. At the conclusion of the discussion group session, the facilitator of each group provided a brief summary to all attendees. The meeting concluded before 9:00 PM.

Below is a summary of the input received on each of the three questions from the discussion groups.

Question 1: What do you think are the problems/challenges in the project corridor?

- Significant queuing throughout during peak traffic hours especially at Blackwater Road
- Problems pulling out at Interstate Drive
- Blackwater Road has problems because of traffic from Cumberland Farms, the drive is very close to the intersection and queued vehicles on Blackwater Road block access
- Willand and Haven Hill used as cut a through - Left turns on 108 cause issues
- Stewarts Ambulance (next to Tri-City) have trouble pulling out
- High volume pedestrian traffic going to medical facilities
- Bus stop locations can cause back ups
- Lack of cross walks throughout
- Old Rochester Road used as a by-pass
- U-turns for eastbound Traffic at Old Weeks Circle to get to Old Rochester Road
- Poor lighting
- 108 doesn't accommodate alternative transportation, such as pedestrians and bicycles
- Lack of shoulders and sidewalks
- Lack of formal bus stops
- High speed traffic (northbound) begins at Long Hill Road
- No signal controls
- At NH Route 236, traffic uses the shoulder for right turns
- At Haven Hill Road intersection, there are sight distance issues in both directions
- Residential structures are too close to road
- Conflicts are present with buses stopping in lane
- Passing in two-way left-turn lane
- Right turn northbound into Haven Hill Road
- Not aesthetically pleasing
- Bus pull offs and stops/ shelters
- Left turn out issues
- Coordinated traffic lights
- Sidewalks- shared peds/bikes

- Underdeveloped properties will be developed in 10 years
- Use lessons learned and implement from Durham 108 project
- Roundabouts require too much land/taking issue
- Roundabouts impede traffic/not helping
- Speed limit too high / 40 mph from 236 to Dover
- Vehicles go faster than speed limit
- Signal timing Blackwater Road
 - Green light is too short on 108
 - Green light too long on Blackwater
- Too many auto crashes
- Moving utility poles out of sidewalk area

Question 2: What do you think is missing in the project corridor?

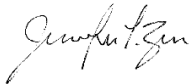
- Sidewalks
- Bus stop shelters (with benches) and bus pull offs
- Access management
- Better street lighting
- Bike accommodations (riding groups leave from The Works Health Club)
- Development that encourages pedestrian access
- Shoulders for bikes
- Streetscaping and landscaping
- Directional signage (particularly to Somersworth businesses) Wayfind
NH236/Blackwater, Masspoint Dam Recreational Area
- Gateway signage
- Promote/improve trails near Willand Pond
- Roundabouts
- Added capacity
- Consistent Lanes
- Lower speeds- roundabouts, narrow lanes/ traffic calming
- Consideration for both residential and commercial needs
- Remove concrete under road
- Alternate Route from 108 to Blackwater
- Bus pull offs out of traffic
- Lighting
- Smart lighting (slow sequence lights)
- Route 108/Willand Drive Intersection left turn/ southbound
- 2-way left turn beginning of Somersworth/Blackwater
- Center turn lane used for other purposes (a problem)
- Electric vehicle charging station
- Low maintenance landscaping

Question 3: What do you think are the opportunities in the project corridor?

- Improve development potential / utilize view and access to Willand Pond
- Reduction in cut-through traffic
- Create an inviting community feel- add streetscapes
- Seating at bus stops
- Spaulding Exit 10 (to Interstate Drive)
- Roundabout at Willand Drive
- Improve NH 236 Intersection particularly Dunkin Donuts drive
- Improvements at Haven Hill Road (roundabout or signal)
- Improve the driveway at The Works
- Economic development
- Multi-use roadway
- Consistency and aesthetics
- Future partnerships with Tri-City community
- Preserve/improve access to Willand Pond
- Promote use, hiking trails
- Reduce emissions/congestion
- Improved signage, especially on getting to downtown areas
- Aesthetics and consistency
- Tri-City transit link
- Put utilities underground
- Utility pole placement (not in sidewalks)
- Put a Toll booth on Rt 108
- Porous Pavement in relation to landscaping/water treatment
- DOT to do a better job than at the Durham 108 project
- Add crosswalks, especially at Goodwin Community Health Center
- Pedestrian safety
- Hawk Beacon- yes!
- Improve drainage at Willand Pond Aquifer (High Street)
- Renaming elements of Route 108 for revitalization
- Prohibit building as approved by local boards, too close to the road (to prevent future land 'taking' issues)
- Cumberland Farms – may be an issue re: turning and trucks ingress/egress and road blockage
- Need Police and Fire Department input on design and/or Traffic Safety Committee input
- Opticom signals vs roundabouts
- Concerns with roundabouts and emergency vehicle movement
- Better utilize Old Rochester Road
- More turn lanes
- Improve business delivery Locations
- Better Signal Technology

- Lower Speeds
- Right turn lane at Blackwater Road
- Add traffic signal at intersection of Blackwater & Old Rochester Road
- 4-way stop at Long Hill Road & Old Rochester Road
- Pass through concern on Kilda Street
- Needs light at Willand Road (near Hilltop Fun Center)

Submitted By:



Jennifer L. Zorn, AICP

ATTACHMENTS:

- Presentation
- Sign-in sheets

***NH Route 108 Complete Streets Improvements
Dover-Somersworth-Rochester 29604***

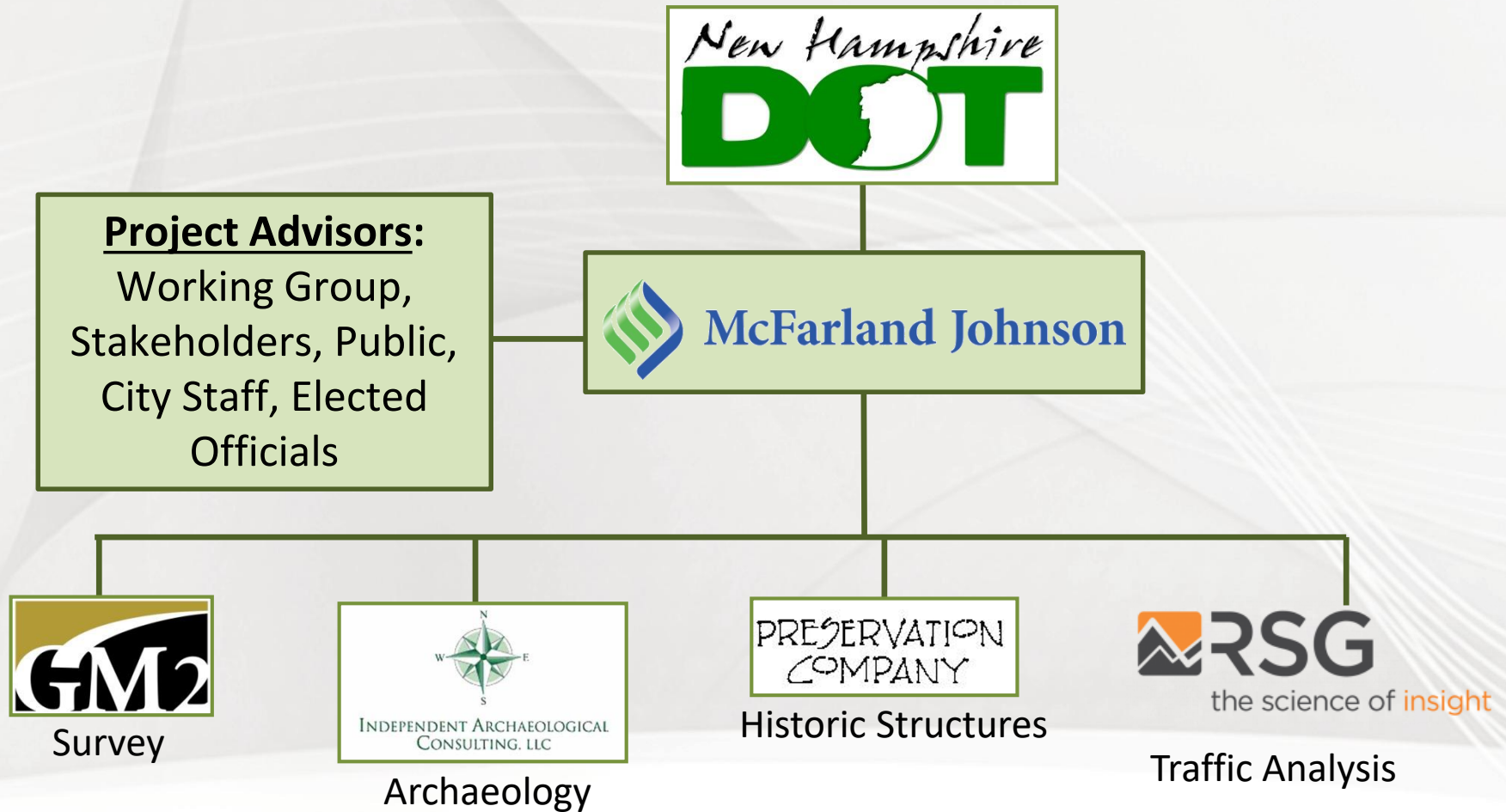
**Public Listening
Session**

May 2, 2019

Agenda

- Opening / Introductions
- Project Overview & Project Limits
- “Complete Street”
- Small Group Discussion
- Project Schedule
- Questions
- Adjourn

Project Team



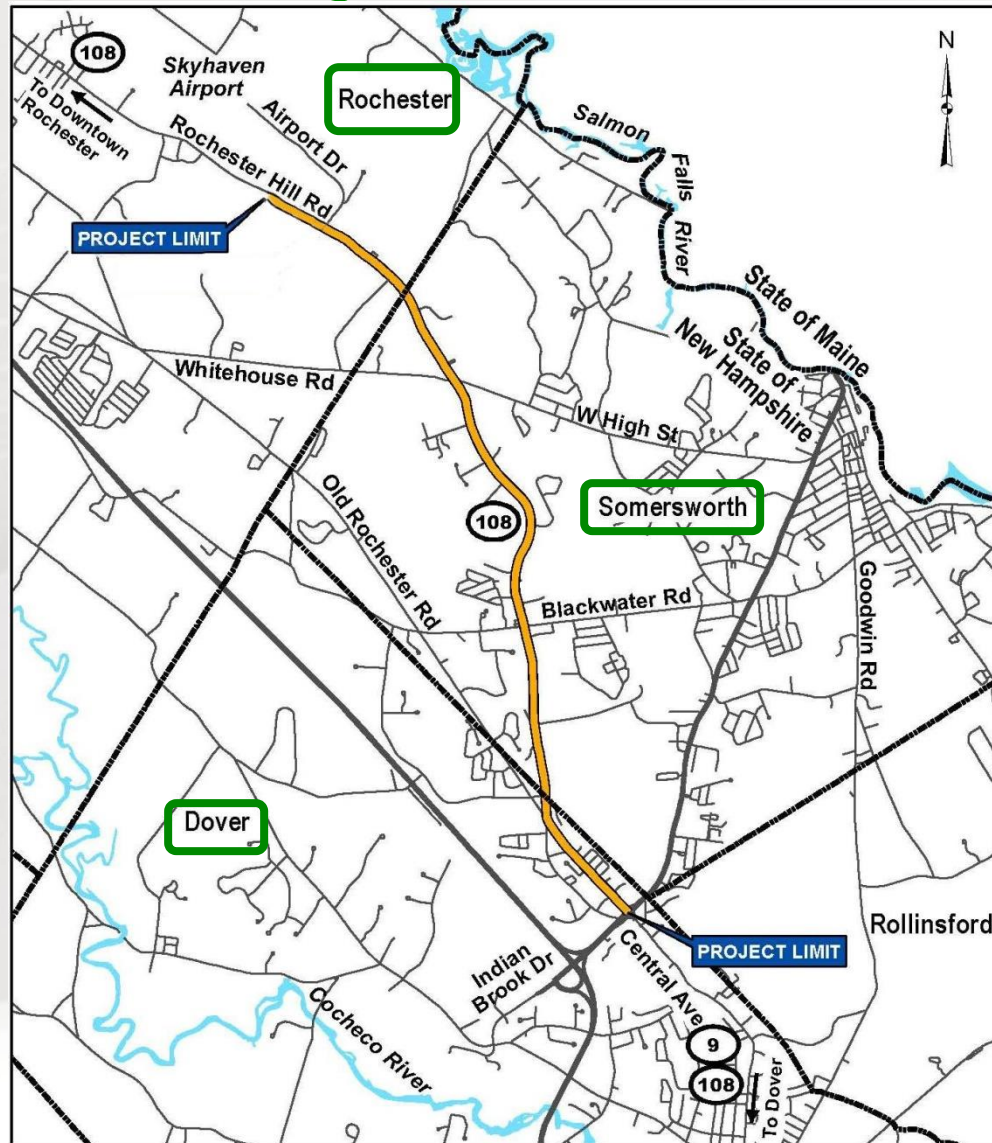
Working Group

Name/Title	Affiliation
Rad Nichols , Executive Director	COAST Bus
Michael Williams , Director of Operations	COAST Bus
Chris Parker , Asst City Manager: Director of Planning and Strategic Initiatives	City of Dover
Gretchen Young , Asst City Engineer	City of Dover
Peter Nourse , Director of Public Works	City of Rochester
Seth Creighton , Chief Planner	City of Rochester
Michael Bezanson , City Engineer	City of Rochester
Robert Belmore , City Manager	City of Somersworth
Shanna Saunders , Director of Development Services	City of Somersworth
Mike Bobinsky , Director Public Works	City of Somersworth
Jen Czyz , Executive Director	Strafford Regional Planning Commission
Colin Lentz , Sr. Transportation Planner	Strafford Regional Planning Commission
James Burdin , Regional Economic Development Planner	Strafford Regional Planning Commission

Cultural Resources

- Need to comply with Section 106 of the National Historic Preservation Act of 1966
- If you wish to become a consulting party, please see me after the meeting

Project Limits



Complete Streets

A Complete Street is a street designed for all users independent of their age or ability and regardless of whether they travel by car, bus, train, bicycle or walk.



Complete Streets Example



NH Route 108 Complete Streets Improvements

Complete Streets Example



Complete Streets Example



**Making
our streets
complete**



Complete Streets Example



NH Route 108 Complete Streets Improvements

Complete Streets Example



NH Route 108 Complete Streets Improvements

Small Group Discussion



Question #1
What do you think are the problems / challenges in the project corridor?

Small Group Discussion



Question #2

What do you think is missing in the project corridor?

Small Group Discussion



Question #3
What do you think are the opportunities in the project corridor?

Project Schedule

Spring 2019 to Winter 2020

- Public Meetings / Walking Tours
- Develop Design Alternatives
- Research Environmental Resources
- Evaluate Design Alternatives
- Evaluate Environmental Impacts
- Publish Environmental Document

Spring 2021 to Fall 2023

- Public Hearing
- Final Design
- Right of Way Acquisitions / Easements
- Environmental Permitting

Summer 2024

Anticipated Start of Construction

Questions / Comments

Project Contact:

Wendy Johnson, PE
NHDOT Project Manager
(603) 271-2171

Wendy.Johnson@dot.nh.gov

www.108TriCityCompleteStreets.com

NH Route 108 Complete Streets Improvements 29604

Listening Session

May 2, 2019



SIGN IN SHEET

Name	City Affiliation	Phone Number	E-Mail
Colin Lentz	Stafford Reg. Planning Commis		
Kenneth Vincent	Council		
Paul Hawthorn			
TODD LEVESQUE	TODD'S TOUCH AUTO		
Rick Michaud	City Council		
MIKE HICKMAN	Resident		
BILL CONNOR	RESIDENT		
Roy Renick	Resident / City worker		
MARTIN DEMONT SR	City Council		
Frank R. Merrill	WIDE INC		
Cathy Swain	Resident Resident		
Gretchen Swain	Resident		
MIKE HUNLUK	DOVER		
Brian Early	Seacoast Media Group		

NH Route 108 Complete Streets Improvements 29604

Listening Session

May 2, 2019

SIGN IN SHEET

Name	City Affiliation	Phone Number	E-Mail
JEN CAYZ	SRPC		
MIKE BOBINSKY	CITY OF SOMERSWORTH		
BOB BELMORE	CITY OF SOMERSWORTH		
NICK+SHANA MITROPoulos	Rochester		
MATT DAVAL	CITY OF SOMERSWORTH P.D.		
REP. GERRI CANNON	CITY OF SOMERSWORTH		
SEAN GEIGHTON	City of Rochester, Planning Dept		
RC GRIMSLEY	CITY OF DAVEN		
Long Gumberton	owner		

NH Route 108 Complete Streets Improvements 29604

Listening Session

May 2, 2019

SIGN IN SHEET

Name	City Affiliation	Phone Number	E-Mail
Gary Lemay	Somersworth		
Edward Mercier	Somersworth		
Paul S. Hilliard	Somersworth		
Ron Cutler	HUGTOP CHERBOLET		
DAVE WITAM	Somersworth		
Eoin Knighes	Somersworth		
Mike Frensch	PET JUNCTION		
Dine Gagnon	Somersworth		

NH Route 108 Complete Streets Improvements 29604

Listening Session

May 2, 2019

SIGN IN SHEET

Name	City Affiliation	Phone Number	E-Mail
Heidi Leske	Somersworth		
Edward Levasseur	Somersworth		
Roxanne Roy (Fishes)	Somersworth		
John Kniffel	Somersworth		
John Bean	Somersworth		